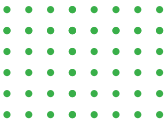




CASE STUDY



FINANCIAL SERVICES



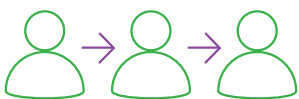
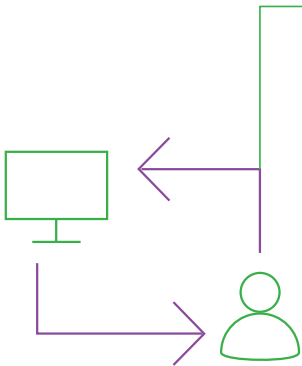
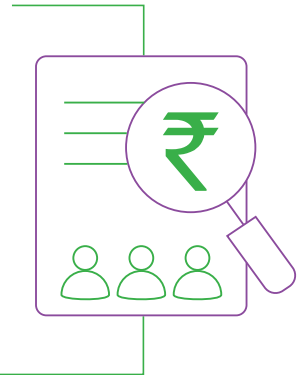
Move-in-Sync powers
30%
savings
in employee transportation
costs for a multinational
financial services giant.

Business Challenge

Client reported high operational costs due to

- under-utilization of assets, and
- leakages in the system.

The organization needed to implement a data-driven approach for operational and financial efficiency. Automation and resulting data & analytics were required to power decision making.



The Move-in-Sync Approach

Tech-solution

Move-in-Sync offered customized employee transport automation aligned with the company's transport policy. With the entire transport operations automated, the client experienced real-time visibility into each critical element of the process.

Strategic Account Management

Experts from Move-in-Sync's dedicated Account Management team actively engaged with cross-functional stakeholders from the client's organization and provided key operational metrics. Active engagement over 2 ½ years contributed to system improvements and minimizing leakages.

Consulting

Move-in-Sync A.R.T (Analytics, Routing, Tech) teams worked together to carefully design and suggest future-proof solutions.

Impact & Business Benefits

A comprehensive upgradation of company's legacy transport systems with Move-in-Sync's cutting-edge technology helped achieve:

1. Approx. 29% of MoM cost saving on a state-of-the-art SaaS implementation, together with:

- data-driven vendor contract re-negotiation into trip distance based categories, and
- predictive analytics for shift consolidation (powered by simulation-based learning)

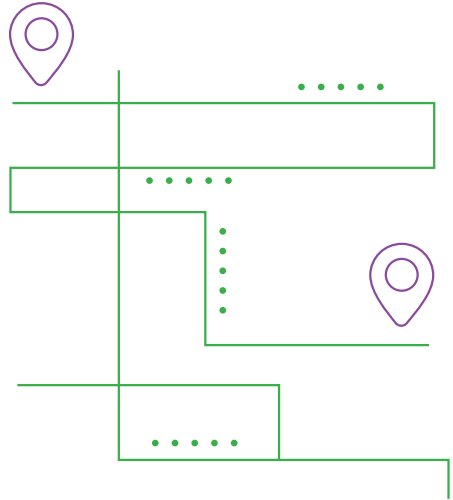
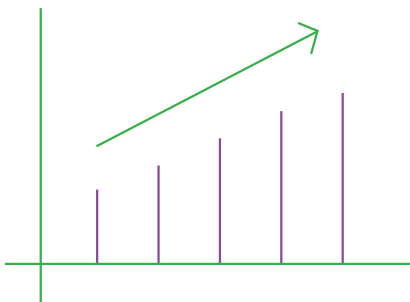
2. Enhanced productivity impelled team re-structuring

3. Decreased no-show rates by 7%

4. Improved vehicle occupancy with an optimized fleet mix. 7 seater vehicles replaced with 4 & 6 seaters

5. Achieved over 80% vehicle utilization by introducing shuttle service and eliminating home-pick/drop for day shifts

6. Phased out ad-hoc layers by introducing flexible operability



Key Highlights

Impact made between June 2016 and October 2018:

- Costs reduced despite increase in unique user count by **20%**

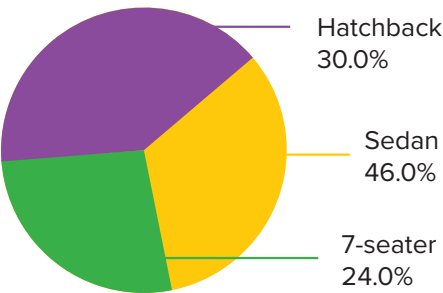
Unique users:

June 2016 - **2100**

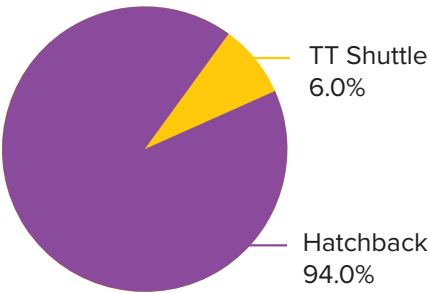
October 2018 - **2500**

- Shift Consolidation:
16% reduction login trips and
17% reduction in logout trips
- Manpower Reduction: **200** man hours
- No-show count dropped by **41%**
June 2016 - **16.89%**
October 2018 - **9.94%**
- Seat Utilization improved by **11%**
June 2016 - **56.4%**
Oct 2018 - **67.3%**
- Fleet Mix Optimized:
80% seat utilization achieved with TT

Fleet Mix: 2016



Fleet Mix: 2018



.....

Technology Value-adds

- Role-based SSO access to TMs, FMs, vendors & employees
- Real-time visibility into function and improved control
- Flexibility and scalability
- Transparent feedback mechanism
- Better end-user experience
- Accurate analytical data and reporting Dashboard
- Enhanced employee safety
- Improved incidence response time

“The Move-in-Sync team supported us through various changes; carefully listened to and acted on our requirements, and shared insights from the tech and analytics team for system improvements. I am glad to say that the Move-in-Sync platform and operational changes we made are sustainable.

The Move-in-Sync team continues to deliver the promises it made 2 years ago with the same level of enthusiasm and support.”

-The Client

.....